

BAYA KOLARIKOVA



HEIGHT 177 CM / 5'9.5" | CHEST 81 CM / 32" | WAIST 61 / 24 | HIPS 88 CM / 34.5" | HAIR LIGHT BROWN | EYES BLUE-GREEN
DRESS 34-36 EU/4-6 US/6-8 UK | SHOES 38.5 EU/7.5 US/5.5 UK

wiener
models
A KULT AGENCY

BAYA KOLARIKOVA

GISELE

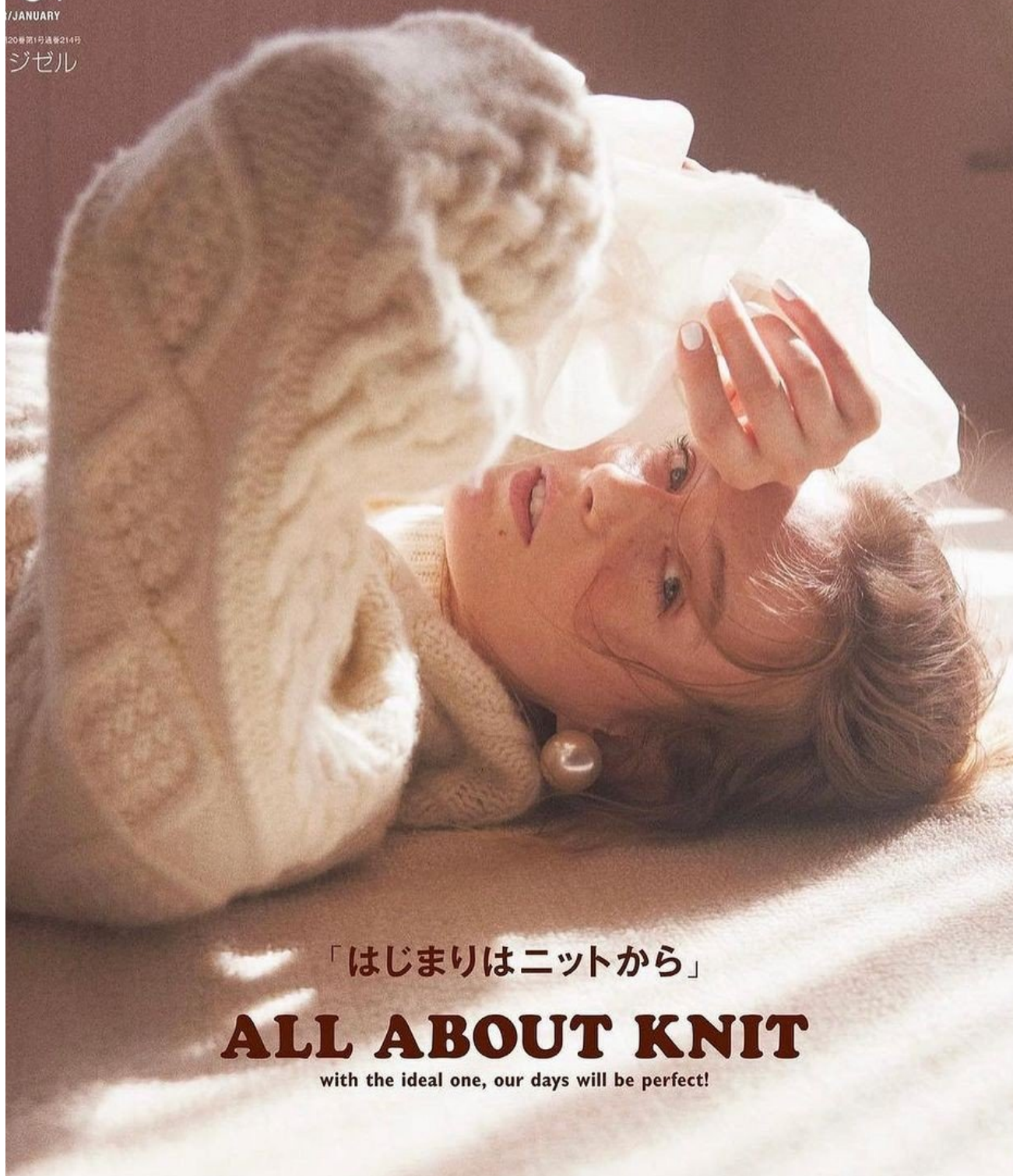
今ならではの楽しみ

/01

JANUARY

20巻第1号通巻214号

ジゼル



「はじまりはニットから」

ALL ABOUT KNIT

with the ideal one, our days will be perfect!

HEIGHT 177 CM / 5'9.5" | CHEST 81 CM / 32" | WAIST 61 / 24 | HIPS 88 CM / 34.5" | HAIR LIGHT BROWN | EYES BLUE-GREEN

DRESS 34-36 EU/4-6 US/6-8 UK | SHOES 38.5 EU/7.5 US/5.5 UK

wiener
models
A KULT AGENCY

BAYA KOLARIKOVA



HEIGHT 177 CM / 5'9.5" | CHEST 81 CM / 32" | WAIST 61 / 24 | HIPS 88 CM / 34.5" | HAIR LIGHT BROWN | EYES BLUE-GREEN
DRESS 34-36 EU/4-6 US/6-8 UK | SHOES 38.5 EU/7.5 US/5.5 UK

wiener
models
A KULT AGENCY

BAYA KOLARIKOVA

Košile: GANNI,
6500 Kč. *Obuv:*
PRADA, INFO O CENĚ
VOBCHODĚ. *Klobouk:*
SILVESTER MARIA
(SYMBOLS), 8250 Kč

Foto
LUKÁŠ KIMUČKA
Styling
MILENA ŽURAVLJOVA
Make-up & vlasy
HRISTINA GEORGIEVSKA
Modelka
BAYA
(ELITE MODEL MANAGEMENT)
Produkce
LENKA HEGEROVÁ
(DAYNIGHT PRODUCTION)
Creative director & text
MARIYA PATROVSKÁ
Asistent fotografa
SAMUEL KRAJČA
Asistentka stylistky
EVŽENIE HABRON

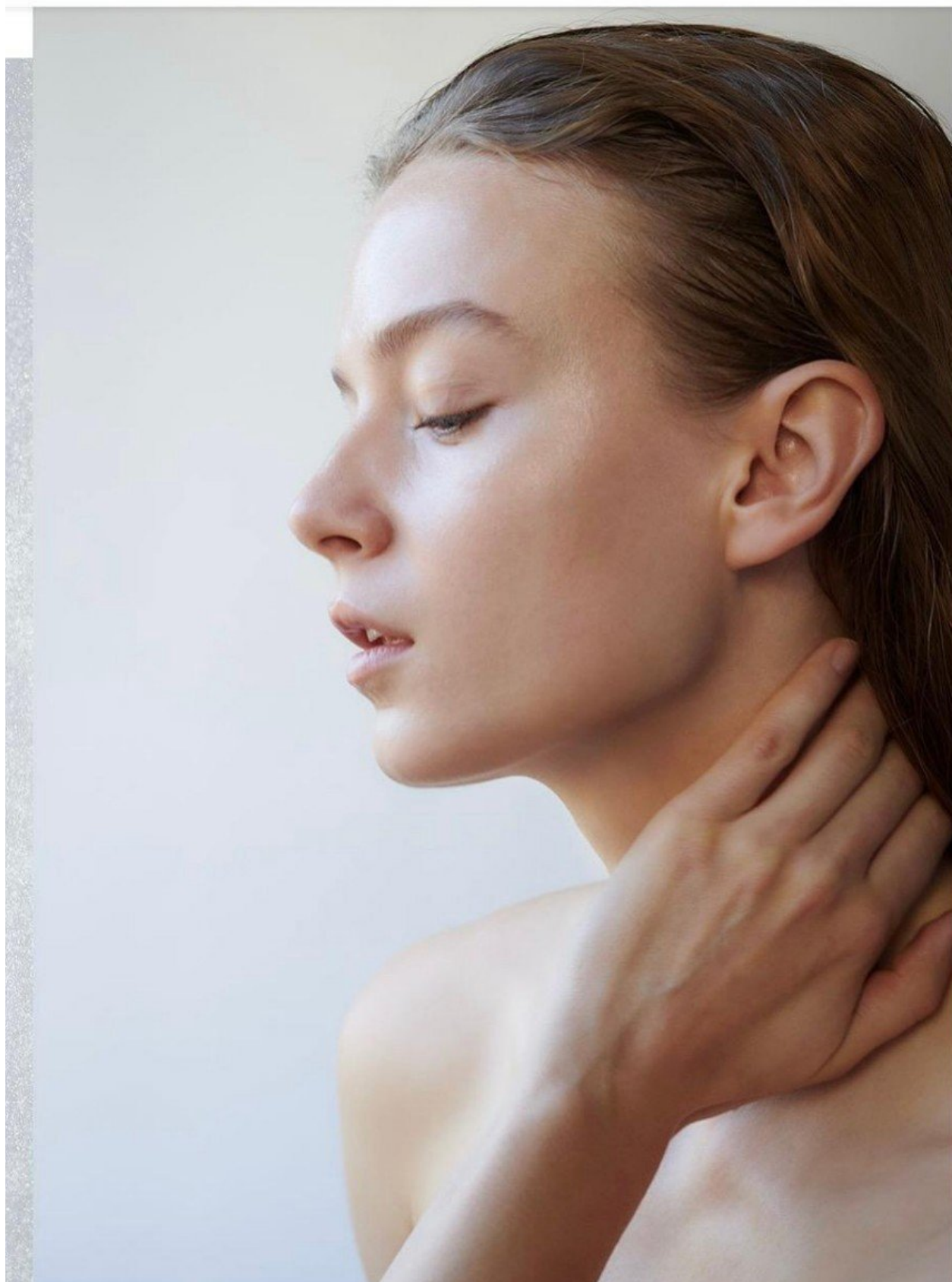
ZAPOSKYTNUTÍ
PROSTOR
KFOCENÍ DĚKUJEME
PRAŽSKÉ TRŽNICI
VHOLESOVIČIČI,
HALA 22
APRODEJCIUM.

HEIGHT 177 CM / 5'9.5" | CHEST 81 CM / 32" | WAIST 61 / 24 | HIPS 88 CM / 34.5" | HAIR LIGHT BROWN | EYES BLUE-GREEN
DRESS 34-36 EU/4-6 US/6-8 UK | SHOES 38.5 EU/7.5 US/5.5 UK

wiener
models
A KULT AGENCY

BAYA KOLARIKOVA

VOGUE



HEIGHT 177 CM / 5'9.5" | CHEST 81 CM / 32" | WAIST 61 / 24 | HIPS 88 CM / 34.5" | HAIR LIGHT BROWN | EYES BLUE-GREEN
DRESS 34-36 EU / 4-6 US / 6-8 UK | SHOES 38.5 EU / 7.5 US / 5.5 UK

wiener
models
A KULT AGENCY

BAYA KOLARIKOVA



HEIGHT 177 CM / 5'9.5" | CHEST 81 CM / 32" | WAIST 61 / 24 | HIPS 88 CM / 34.5" | HAIR LIGHT BROWN | EYES BLUE-GREEN
DRESS 34-36 EU / 4-6 US / 6-8 UK | SHOES 38.5 EU / 7.5 US / 5.5 UK

wiener
models
A KULT AGENCY

BAYA KOLARIKOVA

ÁNA BRNÁKOVÁ

INA KREATIVITA NEMÁ
NE LIMITY. POTVRDZUJÚ TO
KTRAVAGANTNÉ KREÁCIE OD
DÝCH TALENTOV SLOVENSKEJ
ONEJ SCÉNY. POPUSTITE UZDU
EJ FANTÁZII A ZAHRAJTE SA
ATERIÁLOM, SO STRIHOM A J
BENÍM.

UKÁŠ KIMLIČKA
IG LENKA ŠKODOVÁ
A VLASY TOMÁŠ VIDA/DERMACOL
KA BAYA K./ELITE BRATISLAVA

FASHION FANTASIES

HEIGHT 177 CM / 5'9.5" | CHEST 81 CM / 32" | WAIST 61 / 24 | HIPS 88 CM / 34.5" | HAIR LIGHT BROWN | EYES BLUE-GREEN
DRESS 34-36 EU/4-6 US/6-8 UK | SHOES 38.5 EU/7.5 US/5.5 UK

wiener
models
A KULT AGENCY

BAYA KOLARIKOVA

ZAOSTŘENO NA: PLET
sérum, **Génifique**,
Lancôme; korektor,
Master Corrector,
odstín 2 Abricot,
Giorgio Armani;
rozjasňovač, **Fluid Sheer**,
odstín 06 Blossom,
Giorgio Armani;
make-up, **Color Clone**,
odstín 15 Beige Peach,
Helena Rubinstein;
oční stíny, **Eye Tint**,
odstíny 8 Flannel a 9
Cold Copper, **Giorgio**
Armani; lesk na rty,
Volupté Tin-in-Oil,
odstín 3 Undress me,
YSL

šaty, **Odivi**



HEIGHT 177 CM / 5'9.5" | CHEST 81 CM / 32" | WAIST 61 / 24 | HIPS 88 CM / 34.5" | HAIR LIGHT BROWN | EYES BLUE-GREEN

DRESS 34-36 EU/4-6 US/6-8 UK | SHOES 38.5 EU/7.5 US/5.5 UK

wiener
models
A KULT AGENCY

BAYA KOLARIKOVA

DAS ÖSTERREICHISCHE MODEMAGAZIN



ER 2016/17 Nr. 270 €4,90
online.at

9780457590158p 0.9

EXKLUSIV
Karl Lagerfeld
im Interview

Perfect
MATCH

WIE BEZIEHUNGEN DIE
MODE BEFLÜGELN

METALLMAGIE:
SCHMUCKE STATEMENTS
FUNKELNDES MAKE-UP

Glanz-
STUNDEN

DIESER WINTER GIPFELT IN
GLAMOURÖSEN LOOKS, DIE DAS
DRAMA LIEBEN. EIN FEST!

HEIGHT 177 CM / 5'9.5" | CHEST 81 CM / 32" | WAIST 61 / 24 | HIPS 88 CM / 34.5" | HAIR LIGHT BROWN | EYES BLUE-GREEN
DRESS 34-36 EU/4-6 US/6-8 UK | SHOES 38.5 EU/7.5 US/5.5 UK

wiener
models
A KULT AGENCY

BAYA KOLARIKOVA



REPKOVSKÁ

HEIGHT 177 CM / 5'9.5" | CHEST 81 CM / 32" | WAIST 61 / 24 | HIPS 88 CM / 34.5" | HAIR LIGHT BROWN | EYES BLUE-GREEN
DRESS 34-36 EU/4-6 US/6-8 UK | SHOES 38.5 EU/7.5 US/5.5 UK

wiener
models
A KULT AGENCY

BAYA KOLARIKOVA



HEIGHT 177 CM / 5'9.5" | CHEST 81 CM / 32" | WAIST 61 / 24 | HIPS 88 CM / 34.5" | HAIR LIGHT BROWN | EYES BLUE-GREEN
DRESS 34-36 EU / 4-6 US / 6-8 UK | SHOES 38.5 EU / 7.5 US / 5.5 UK

wiener
models
A KULT AGENCY

BAYA KOLARIKOVA



ZUZANA LOS-BOŽÍKO

HEIGHT 177 CM / 5'9.5" | CHEST 81 CM / 32" | WAIST 61 / 24 | HIPS 88 CM / 34.5" | HAIR LIGHT BROWN | EYES BLUE-GREEN
DRESS 34-36 EU / 4-6 US / 6-8 UK | SHOES 38.5 EU / 7.5 US / 5.5 UK

wiener
models
A KULT AGENCY

BAYA KOLARIKOVA



HEIGHT 177 CM / 5'9.5" | CHEST 81 CM / 32" | WAIST 61 / 24 | HIPS 88 CM / 34.5" | HAIR LIGHT BROWN | EYES BLUE-GREEN
DRESS 34-36 EU / 4-6 US / 6-8 UK | SHOES 38.5 EU / 7.5 US / 5.5 UK

wiener
models
A KULT AGENCY

BAYA KOLARIKOVA



IS REPKOVSKÁ
čky, STEVE MADDEN Aupark

HEIGHT 177 CM / 5'9.5" | CHEST 81 CM / 32" | WAIST 61 / 24 | HIPS 88 CM / 34.5" | HAIR LIGHT BROWN | EYES BLUE-GREEN
DRESS 34-36 EU / 4-6 US / 6-8 UK | SHOES 38.5 EU / 7.5 US / 5.5 UK

BAYA KOLARIKOVA



HEIGHT 177 CM / 5'9.5" | CHEST 81 CM / 32" | WAIST 61 / 24 | HIPS 88 CM / 34.5" | HAIR LIGHT BROWN | EYES BLUE-GREEN
DRESS 34-36 EU / 4-6 US / 6-8 UK | SHOES 38.5 EU / 7.5 US / 5.5 UK

wiener
models
A KULT AGENCY

BAYA KOLARIKOVA



HEIGHT 177 CM / 5'9.5" | CHEST 81 CM / 32" | WAIST 61 / 24 | HIPS 88 CM / 34.5" | HAIR LIGHT BROWN | EYES BLUE-GREEN
DRESS 34-36 EU / 4-6 US / 6-8 UK | SHOES 38.5 EU / 7.5 US / 5.5 UK

wiener
models
A KULT AGENCY

BAYA KOLARIKOVA



Šaty, rolák a čizmy, *Dior*

eva 133

HEIGHT 177 CM / 5'9.5" | CHEST 81 CM / 32" | WAIST 61 / 24 | HIPS 88 CM / 34.5" | HAIR LIGHT BROWN | EYES BLUE-GREEN
DRESS 34-36 EU/4-6 US/6-8 UK | SHOES 38.5 EU/7.5 US/5.5 UK

wiener
models
A KULT AGENCY

BAYA KOLARIKOVA



HEIGHT 177 CM / 5'9.5" | CHEST 81 CM / 32" | WAIST 61 / 24 | HIPS 88 CM / 34.5" | HAIR LIGHT BROWN | EYES BLUE-GREEN
DRESS 34-36 EU / 4-6 US / 6-8 UK | SHOES 38.5 EU / 7.5 US / 5.5 UK

wiener
models
A KULT AGENCY

BAYA KOLARIKOVA



HEIGHT 177 CM / 5'9.5" | CHEST 81 CM / 32" | WAIST 61 / 24 | HIPS 88 CM / 34.5" | HAIR LIGHT BROWN | EYES BLUE-GREEN
DRESS 34-36 EU / 4-6 US / 6-8 UK | SHOES 38.5 EU / 7.5 US / 5.5 UK

wiener
models
A KULT AGENCY

BAYA KOLARIKOVA



HEIGHT 177 CM / 5'9.5" | CHEST 81 CM / 32" | WAIST 61 / 24 | HIPS 88 CM / 34.5" | HAIR LIGHT BROWN | EYES BLUE-GREEN
DRESS 34-36 EU / 4-6 US / 6-8 UK | SHOES 38.5 EU / 7.5 US / 5.5 UK

wiener
models
A KULT AGENCY

BAYA KOLARIKOVA

variante *PJAMAPANTS*

「どうせならシーンレス」

もはや新定番に仲間入りしつつある
パジャマパンツは、今季も人気続行。
今から買うなら「ご近所服」に終わらない、
主役になるルックスを重視。

個性のある白と黒で モノトーンをリニューアル

白スリーブレスデニムジャケット 19,800
+税、黒タンクトップ 5,800円+税、ベル
つきプリントパンツ 25,000円+税/以上
IESEL (DIESEL JAPAN) 漫画の吹き出
が大胆にON。そんなコミカルな見た目と
裏腹に、なめらかな質感がセンシュアルな
大人のためのパジャマパンツ。

075 GISELE

HEIGHT 177 CM / 5'9.5" | CHEST 81 CM / 32" | WAIST 61 / 24 | HIPS 88 CM / 34.5" | HAIR LIGHT BROWN | EYES BLUE-GREEN
DRESS 34-36 EU / 4-6 US / 6-8 UK | SHOES 38.5 EU / 7.5 US / 5.5 UK

wiener
models
A KULT AGENCY

BAYA KOLARIKOVA

EVAmóda



Sako a šortky, *Boris Hanečka*
Roták, *H & M Studio*
Čižmy, *Dior*

132 **eva**

HEIGHT 177 CM / 5'9.5" | CHEST 81 CM / 32" | WAIST 61 / 24 | HIPS 88 CM / 34.5" | HAIR LIGHT BROWN | EYES BLUE-GREEN
DRESS 34-36 EU/4-6 US/6-8 UK | SHOES 38.5 EU/7.5 US/5.5 UK

wiener
models
A KULT AGENCY

BAYA KOLARIKOVA



DISCO INFERNO

Flitre a kožuchy. Mramor a kov. Ťažké rána po pretancovanej noci. Dôkladne sa pripravte na párty sezónu ako topmodelka agentúry Elite Baya Koláriková.

Foto **Patrícia Kvasňovská** Styling **Zuzana Kanisová** Meikap a vlasy **Hristina Georgievská** Modelka **Baya Koláriková/Elite Bratislava** Za poskytnutie priestorov ďakujeme Hotelu Ambassador v Prahe.

eva 131

HEIGHT 177 CM / 5'9.5" | CHEST 81 CM / 32" | WAIST 61 / 24 | HIPS 88 CM / 34.5" | HAIR LIGHT BROWN | EYES BLUE-GREEN
DRESS 34-36 EU / 4-6 US / 6-8 UK | SHOES 38.5 EU / 7.5 US / 5.5 UK

wiener
models
A KULT AGENCY

BAYA KOLARIKOVA

LIDOVÉ NOVINY

esprit

Stylový magazín Lidových novin

MÓDNÍ TRENDY

Podzim/zima 2018

HEIGHT 177 CM / 5'9.5" | CHEST 81 CM / 32" | WAIST 61 / 24 | HIPS 88 CM / 34.5" | HAIR LIGHT BROWN | EYES BLUE-GREEN
DRESS 34-36 EU/4-6 US/6-8 UK | SHOES 38.5 EU/7.5 US/5.5 UK

wiener
models
A KULT AGENCY

BAYA KOLARIKOVA



HEIGHT 177 CM / 5'9.5" | CHEST 81 CM / 32" | WAIST 61 / 24 | HIPS 88 CM / 34.5" | HAIR LIGHT BROWN | EYES BLUE-GREEN
DRESS 34-36 EU/4-6 US/6-8 UK | SHOES 38.5 EU/7.5 US/5.5 UK

wiener
models
A KULT AGENCY